

SIX-PHASE TABLE

	HUMORAL PHASES		MATRIX PHASES		CELLULAR PHASES	
Organ/Systems	Excretion Phase	Inflammation Phase	Deposition Phase	Impregnation Phase	Increasing toxin loads	Detoxification Phase
Skin	psoriasis, eczema	Alopecia				
Nervous System	Dizziness, vertigo	Numbness				
Sensory System	Headaches	Conjunctivitis, rhinitis				
Locomotive System	Joint pain	Myalgia				
Respiratory Tract	Cough, sputum	Hoarseness, voice				
Cardiovascular System	Heartburn, palpitations	Endocarditis, pericarditis				
Endocrinological System	Menstrual	Endocrine glands				
Immunological System	Allergies					
Blood	Leukemias	Leukopenia, leukocytosis				
Lymph System	Lymphomas	Lymphatic infections, lymphadenitis				
Metabolic	Diabetes	Diabetes mellitus, hypothyroidism				
Reproductive System	Infertility	Thyroiditis				
Immune System	Autoimmune diseases	Autoimmune diseases, allergies				
Mitochondria						
Psycho						

Progressive Vicariation (indicated by a red arrow pointing from the Inflammation phase to the Excretion phase)

Regressive Vicariation (indicated by a red arrow pointing from the Excretion phase to the Inflammation phase)

Organs (indicated by a red bracket on the left side of the table)

Increasing toxin loads (indicated by a red arrow pointing downwards from the top of the table)

Decreasing toxin loads (indicated by a red arrow pointing upwards from the bottom of the table)

Useful guide for practitioners to utilize antihomotoxic medicines (indicated by a red arrow pointing from the bottom of the table to the text)

International Society of Homotoxicology www.homotox.com

Table of Homotoxicosis

HUMORAL PHASES OF DISEASE:

- 1) Excretion phase
- 2) Inflammation phase

Organ/Systems	Excretion Phase	Inflammation Phase	Deposition Phase	Impregnation Phase	Increasing toxin loads	Detoxification Phase
Skin	psoriasis, eczema	Alopecia				
Nervous System	Dizziness, vertigo	Numbness				
Sensory System	Headaches	Conjunctivitis, rhinitis				
Locomotive System	Joint pain	Myalgia				
Respiratory Tract	Cough, sputum	Hoarseness, voice				
Cardiovascular System	Heartburn, palpitations	Endocarditis, pericarditis				
Endocrinological System	Menstrual	Endocrine glands				
Immunological System	Allergies					
Blood	Leukemias	Leukopenia, leukocytosis				
Lymph System	Lymphomas	Lymphatic infections, lymphadenitis				
Metabolic	Diabetes	Diabetes mellitus, hypothyroidism				
Reproductive System	Infertility	Thyroiditis				
Immune System	Autoimmune diseases	Autoimmune diseases, allergies				
Mitochondria						
Psycho						

July 2006, R. U. Gerard

Excretion Phase



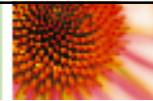
- Most effective physiological reaction
- Healthy enzymatic activity
- Toxins are not in contact with epithelial cells of mucous membranes
- Favourable prognosis

-Heel

July 2006, R. U. Gerard

24

Excretion Phase



- A person can get suppressed in this phase (if taking allopathic drugs)
- The overall health could be deteriorating although the symptoms may be controlled (e.g. asthma)
 - ▶ i.e. if asthma is suppressed, it could later lead to fibrosis of the lungs

-Heel

July 2006, R. U. Gerard

25

Inflammation Phase



- To rid toxins and renew tissues
- Defense mechanisms are active and efficient
- Elimination of the toxins through pus, mucous, skin eruptions, etc.
- Should not totally suppress it
- Needs to be modulated

-Heel

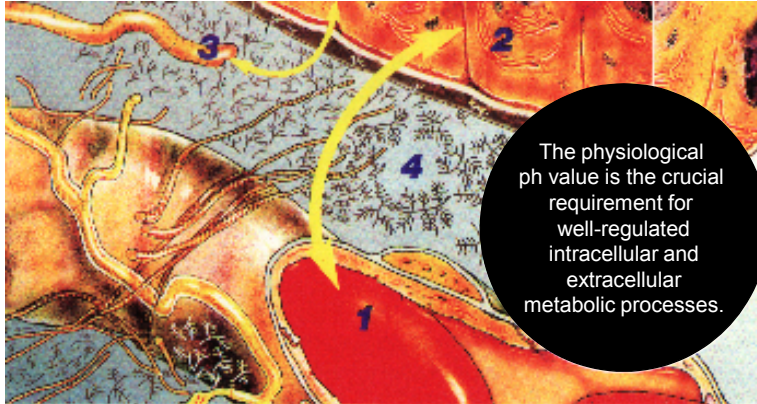
Table of Homotoxicosis



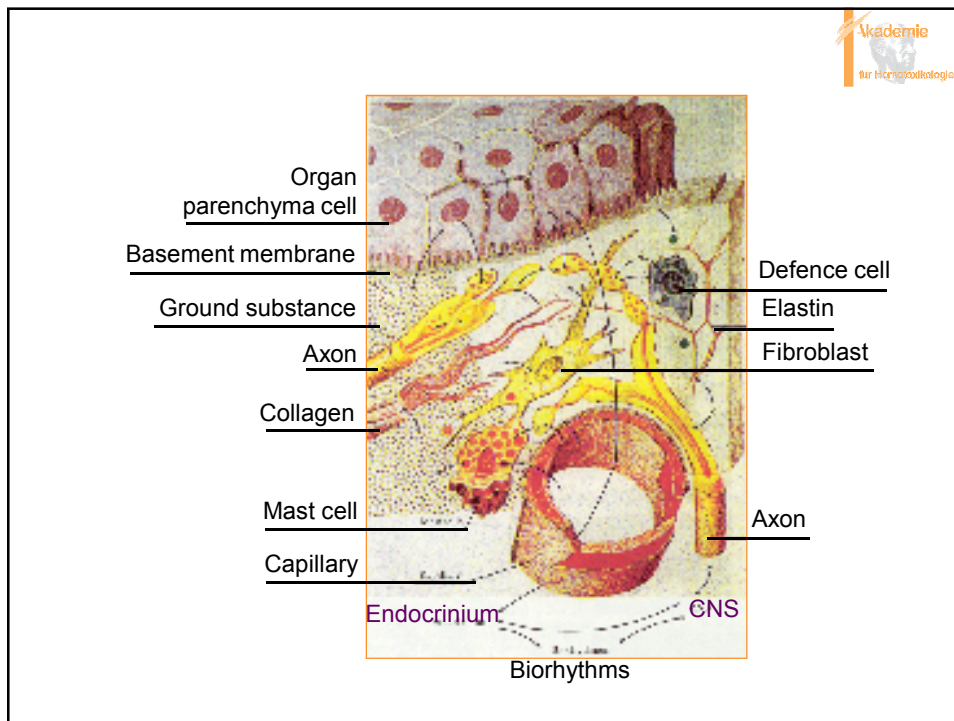
MATRIX PHASES OF DISEASE:

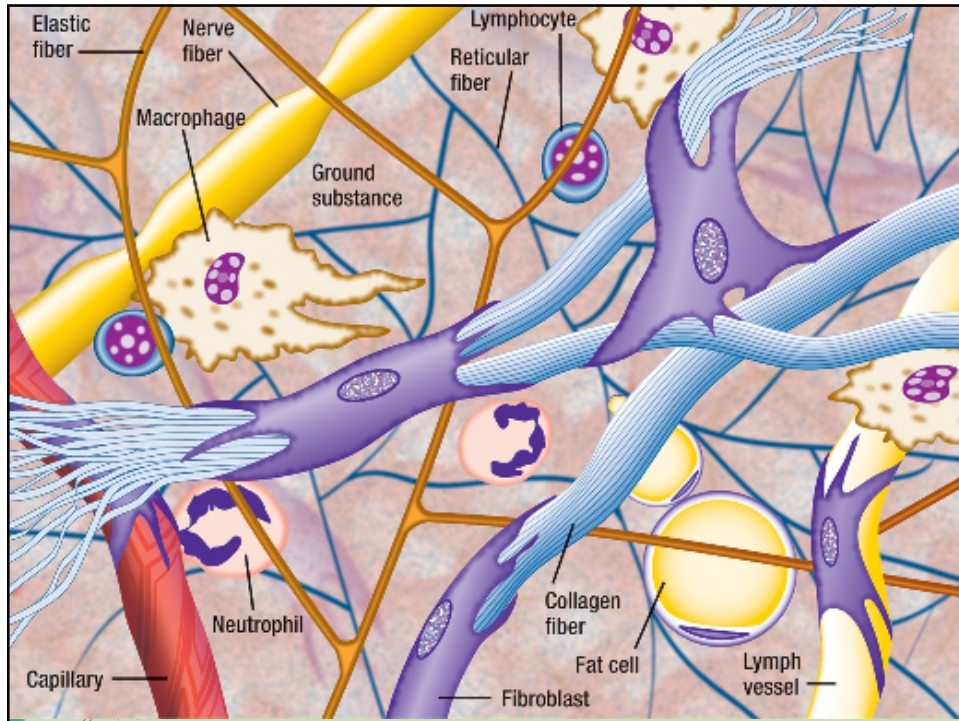
- 1) Deposition phase
- 2) Impregnation phase

	DEPOSITION PHASE	IMPREGNATION PHASE	DEPOSITION PHASE	IMPREGNATION PHASE	DEPOSITION PHASE	IMPREGNATION PHASE
1
2
3
4
5
6
7
8
9
10
11
12
13
14
15
16
17
18
19
20

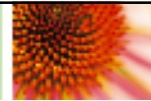


The system of ground regulation: all substances that are to pass out of the capillaries 1 or information which is to pass from the autonomic nervous system 2 into the parenchymal cells 3, or which is to pass out of those cells, must successfully cross the transit route with the extracellular matrix 4.





Deposition Phase



- Mechanisms of the body are overworked
- Toxins are deposited in the matrix
- Examples of symptoms: warts, atheromas, polyps, biliary or renal stones, gout, BPH, etc.
- Often can progress with very few symptoms

-Heel

Table of Homotoxicosis



BIOLOGICAL DIVISION

	EXTRACELLULAR	INTRACELLULAR	CELLULAR	EXTRACELLULAR	INTRACELLULAR
1.1	Extracellular	Intracellular	Cellular	Extracellular	Intracellular
1.2	Extracellular	Intracellular	Cellular	Extracellular	Intracellular
1.3	Extracellular	Intracellular	Cellular	Extracellular	Intracellular
1.4	Extracellular	Intracellular	Cellular	Extracellular	Intracellular
1.5	Extracellular	Intracellular	Cellular	Extracellular	Intracellular
1.6	Extracellular	Intracellular	Cellular	Extracellular	Intracellular
1.7	Extracellular	Intracellular	Cellular	Extracellular	Intracellular
1.8	Extracellular	Intracellular	Cellular	Extracellular	Intracellular
1.9	Extracellular	Intracellular	Cellular	Extracellular	Intracellular
1.10	Extracellular	Intracellular	Cellular	Extracellular	Intracellular
1.11	Extracellular	Intracellular	Cellular	Extracellular	Intracellular
1.12	Extracellular	Intracellular	Cellular	Extracellular	Intracellular
1.13	Extracellular	Intracellular	Cellular	Extracellular	Intracellular
1.14	Extracellular	Intracellular	Cellular	Extracellular	Intracellular
1.15	Extracellular	Intracellular	Cellular	Extracellular	Intracellular
1.16	Extracellular	Intracellular	Cellular	Extracellular	Intracellular
1.17	Extracellular	Intracellular	Cellular	Extracellular	Intracellular
1.18	Extracellular	Intracellular	Cellular	Extracellular	Intracellular
1.19	Extracellular	Intracellular	Cellular	Extracellular	Intracellular
1.20	Extracellular	Intracellular	Cellular	Extracellular	Intracellular

July 2006, R. U. Gerard

32

The Biological Division



- Patient is in between deposition and impregnation, moving from extracellular to intracellular intoxication
- Goes into a state of entropy, stops self-regulating
- Development of Regulation Rigidities, type I and II
- Patient starts to compensate
- A potentially irreversibly modified structure which cannot adequately detoxify

-Heel

July 2006, R. U. Gerard

33

Impregnation Phase



- Toxins become a part of the connective tissue and the matrix
- Changes in the structural components and their functions
- More severe symptoms and signs demonstrate damage of the organ cells
- Classical treatments have usually failed at this stage

-Heel

Table of Homotoxicosis



CELLULAR PHASES OF DISEASE:

- 1) Degeneration phase
- 2) Dedifferentiation phase

CELLULAR PHASE	DEGENERATION PHASE			DEDIFFERENTIATION PHASE		
	CELLULAR PHASE	CELLULAR PHASE	CELLULAR PHASE	CELLULAR PHASE	CELLULAR PHASE	CELLULAR PHASE
1	1	2	3	4	5	6
2	7	8	9	10	11	12
3	13	14	15	16	17	18
4	19	20	21	22	23	24
5	25	26	27	28	29	30
6	31	32	33	34	35	36
7	37	38	39	40	41	42
8	43	44	45	46	47	48
9	49	50	51	52	53	54
10	55	56	57	58	59	60
11	61	62	63	64	65	66
12	67	68	69	70	71	72
13	73	74	75	76	77	78
14	79	80	81	82	83	84
15	85	86	87	88	89	90
16	91	92	93	94	95	96
17	97	98	99	100	101	102
18	103	104	105	106	107	108
19	109	110	111	112	113	114
20	115	116	117	118	119	120

Degeneration Phase



- Serious damage and destruction of one or more organs
- Continuous stimulation of the cells caused by the accumulation of toxins in the tissues
- The exhaustion of the defense mechanisms leads to the proliferation of abnormal cells

-Heel

July 2006, R. U. Gerard

36

Dedifferentiation Phase



- Organism is overcome by the toxic effect of the homotoxins
- Toxins change the DNA and cellular enzymes
- Atypical stem cell formation
- Loss of control of the organism on the development of cells

-Heel

July 2006, R. U. Gerard

37

REACTIVITY

©2000 Guna S.r.l. Scientific Department

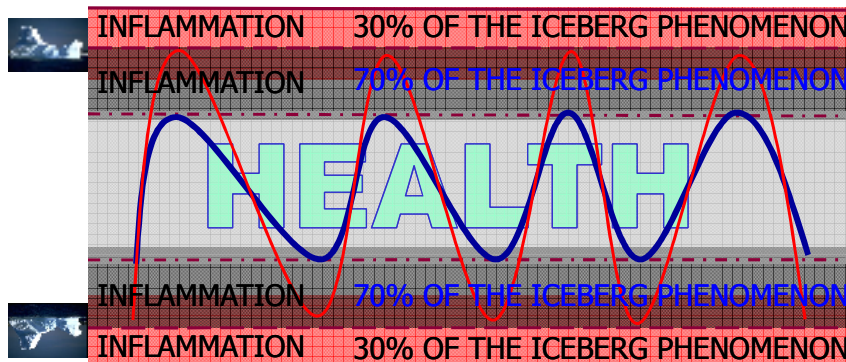
-Heel

July 2006, R. U. Gerard

38

VON BERTANLAFFY'S THEORY

"The organism is a flow system in dynamic balance"



©2000 Guna Scientific Department

Iceberg Analogy



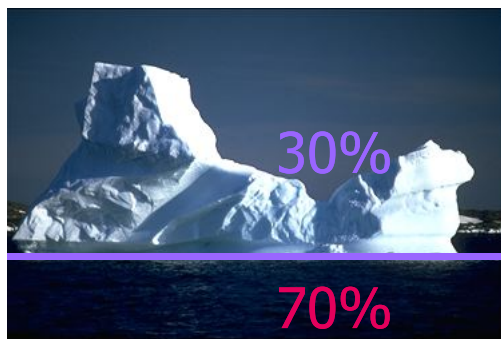
- Cellular destruction and impregnation is showing above the water
- In biological medicine, treat what is underneath the water
- What is showing is just a footprint of what is actually happening in the matrix

-Heel

July 2006, R. U. Gerard

40

THE ICEBERG PHENOMENON



CALOR
DOLOR
TUMOR
RUBOR
FUNCTIO LAESA

← ASYMPTOMATIC
INFLAMMATION

It is at this level that nosodes and suis-organ preparations act

©2000 Guna S.r.l. Scientific Department

