

Sanum



Linda Henderson
HD, DTCM, DNM, ROHP, RBT

©This Education manual may not be duplicated by any means, electronic or otherwise, without express written permission from CHS (The College of International Holistic Studies)

Pleomorphism

- Based on the theory that every warm-blooded organism houses a primal plant germ
- This can change in form through environmental influences
- Believe in fundamental mutability of a micro-organism form
- Can quickly change from an avirulent benign form into potentially virulent (pathogenic) form

©This Education manual may not be duplicated by any means, electronic or otherwise, without express written permission from CHS (The College of International Holistic Studies)

Allopathic Medicine

- Based on monomorphism
- Assigns only a single form and function to micro-organisms
- Does not recognize cyclic developmental changes

©This Education manual may not be duplicated by any means, electronic or otherwise, without express written permission from CIHS (The College of International Holistic Studies)

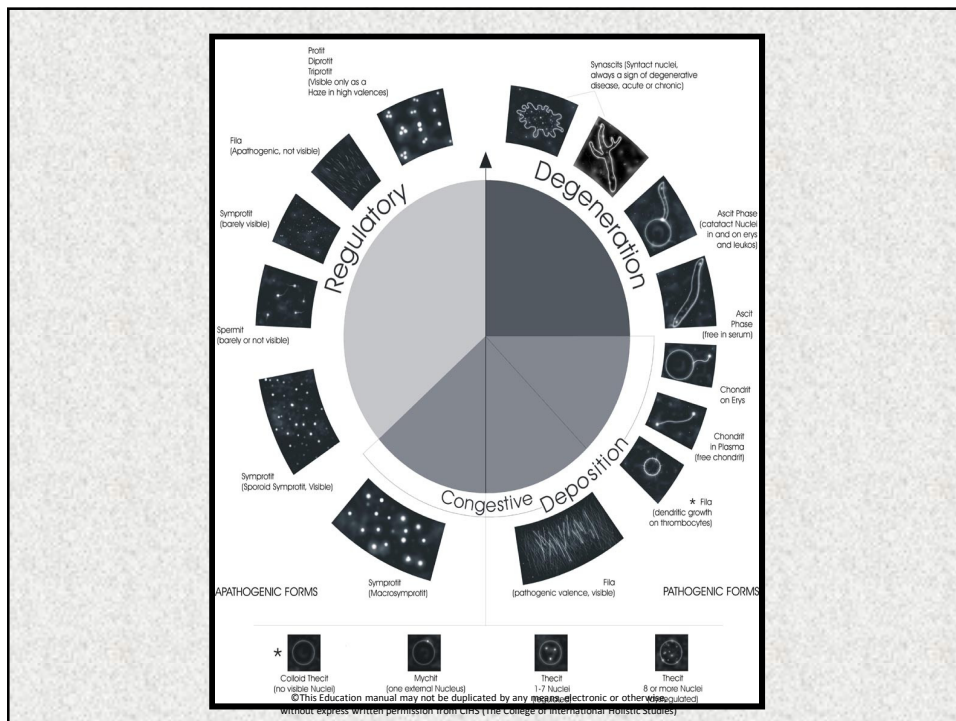
History

- Started with French researcher A. Bechamp
- 1872-1968 Dr. Gunther Enderlein researcher & microbiologist creator of pleomorphism
- 1916 discovered that a primitive micro organic forms prepared in a remedy in combination with a change in the body's biological terrain can cause the virulent forms to return to their original avirulent condition thereby bringing about healing to the host body

©This Education manual may not be duplicated by any means, electronic or otherwise, without express written permission from CIHS (The College of International Holistic Studies)

- “Spermits” – tiniest mobile living forms of bacteria exchange genetic material with higher developmental organisms, the HDO became suddenly invisible, having been broken down into their primitive avirulent form.
- This knowledge led to isopathic/homeopathic remedies developed from fungal cultures.
- when brought into contact with virulent microbial masses, these masses returned to avirulent forms and leave the body via the eliminative organs

©This Education manual may not be duplicated by any means, electronic or otherwise, without express written permission from CHS (The College of International Holistic Studies)



- Bechamp proved all animal & plant cells contained tiny particles which continue to live even after the death of the organism
- Microorganisms develop out of these
- They “can undergo considerable variation in form without losing their specific functions”
- Dramatic difference from allopathic which maintains “an organism only has a single form and function”

©This Education manual may not be duplicated by any means, electronic or otherwise, without express written permission from CIHS (The College of International Holistic Studies)

- Louis Pasteur believed microorganisms exist without any changes – monomorphistic view still believed by medical establishment today – concept of disease process
- Enderlein proved every organism houses a primal plant germ which can become subject of a variation in form through exogenic influences
- By examining blood with darkfield microscope, he observed the smallest living forms he called “endobionts” living in genuine symbiosis with host organism with mutual benefits.
- Through outer factors, these living forms multiply and develop disturbing the symbiotic equilibrium

©This Education manual may not be duplicated by any means, electronic or otherwise, without express written permission from CIHS (The College of International Holistic Studies)

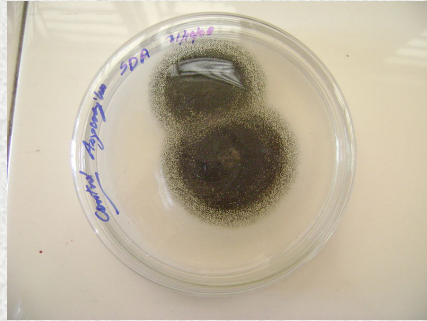
- A healthy organism can restore balance
- An unhealthy organism (not in harmony with nature) creates a greatly compromised equilibrium
- Higher valanced, parasitic growth forms are harmful to the body fluids
- Functional disturbances such as headaches, high or low blood pressure, feeling poorly, unmotivated attitudes, lack of appetite, poor complexion, coated tongue, wounds in the mouth, pimples, sores, hoarseness, catarrhs, ear noises, diarrhea, lowered capacity for seeing and hearing, depressions, weak concentration, and/or poor memory

©This Education manual may not be duplicated by any means, electronic or otherwise, without express written permission from CHS (The College of International Holistic Studies)

- Condition of the milieu determines whether the symbiont wins out over disease or develops unchecked into parasites
- If inner milieu is damaged due to poor nutrition or unhealthy lifestyle (both of which can upset the acid/base equilibrium), environmental toxins, constant infections, psychological depression the result will be an incapability of the individual to restore symbiotic equilibrium – disease will manifest and damage the body

©This Education manual may not be duplicated by any means, electronic or otherwise, without express written permission from CHS (The College of International Holistic Studies)

Mold Fungi



Aspergillus nigervan Tieghem



Mucor racemosus Fresen

©This Education manual may not be duplicated by any means, electronic or otherwise, without express written permission from CHS (The College of International Holistic Studies)

Isopathic Therapy

- Set of specific biological remedies for all nonspecific, general symptoms that pertain to the Endobiosis Complex
- 2 mold fungi – *Aspergillus nigervan Tieghem*
- - *Mucor racemosus Fresen*
- Beginning from primitive phases as tiniest colloidal albuminoid particles, via the bacterial phase up to the fungal phase

©This Education manual may not be duplicated by any means, electronic or otherwise, without express written permission from CHS (The College of International Holistic Studies)

Mucor

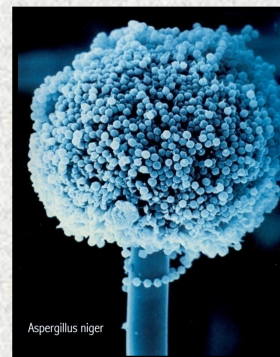
- Mucor is transformed (through excessive animal protein, sugars, and other acidifying factors) into the worst kind of parasite.
- It has a congestive effect, causing circulatory hindrance and subsequent underoxygenation of the tissues and cells. This leads to cancer, heart disease, and strokes.



©This Education manual may not be duplicated by any means, electronic or otherwise, without express written permission from CIHS (The College of International Holistic Studies)

Aspergillus niger van Teighem

- Aspergillus is related to tuberculin and paratuberculin disorders—generally a breakdown of the body rather than congestion.
- The working method of Aspergillus is the misdirection of biological processes.
- In degenerative disease, Aspergillus and Mucor are always addressed together therapeutically.



©This Education manual may not be duplicated by any means, electronic or otherwise, without express written permission from CIHS (The College of International Holistic Studies)

How to Use Sanums

- Often individual presents set of symptoms and syndromes such as IBS, Fibromyalgia, Chronic fatigue, allergies, depression, adrenal insufficiency
- Present for years, suppressed by conventional treatments, still persist
- Routinely experience toxic reactions – environmental toxins, heavy metals, food intolerances, psychological stress and/or drugs
- Stubborn, chronic and degenerative conditions

©This Education manual may not be duplicated by any means, electronic or otherwise, without express written permission from CHS (The College of International Holistic Studies)

4 Step system

- STEP ONE: **Terrain (milieu)**
- Begin by alkalizing the small intestine and removing primary antigens – 3 weeks or as long as pH levels remain acidic (1st morning void should read 6.8-7.4)
- **Alkala** – pulls acids out of the body by reloading the bicarbonate buffer system and supports the digestive function of the pancreas and liver

©This Education manual may not be duplicated by any means, electronic or otherwise, without express written permission from CHS (The College of International Holistic Studies)

Support With

- **Sanuvis** – used for conditions that fall into the Mucor racemosus cycle: circulatory conditions, stroke, thrombophlebitis, anemia, hemorrhoids, arteriosclerosis
- **Citrokehl** – used for issues that fall into the Aspergillus niger cycle: chronic diseases, diseases of the lungs, skin, joint, GI, lymph, kidneys, ligaments, bones, brain and other “tuberculinic” type disorders

©This Education manual may not be duplicated by any means, electronic or otherwise, without express written permission from CIHS (The College of International Holistic Studies)

STEP TWO – Inflammation

- By utilizing the appropriate penicillium chondritin, practitioner can regulate the inflammation process within the milieu
- Choose from:
 - **Pleo-Not** - for both chronic & acute bacterial infections esp. staph/strep
 - **Pleo Fort** – for rebalancing gastrointestinal symbiosis incl digestive mycosis
 - **Pleo Quent** – for acute, chronic and latent viral infections
 - **Pleo Albican** - for chronic & systemic mycosis (fungus) of the mucous membranes
 - **Pleo Pef** - for enteral mycosis when fungus is first entering orifices & for dental conditions
 - **Pleo Ex** - a combination of Alb, Pef & Fort. For chronic fungal infections & all types of mycosis, especially of the mucous membranes

©This Education manual may not be duplicated by any means, electronic or otherwise, without express written permission from CIHS (The College of International Holistic Studies)

Step Three - Basics

- Introducing low valance forms of Mucor and Aspergillus organisms (protits), stimulates the breakdown & elimination of higher valance forms by these protits
- **Pleo Muc** - for circulation & congestive conditions. Increases circulation & decreases congestion, especially affecting the cardiovascular system
- **Pleo Nig** – for tubercular & paratubercular conditions like mucous membranes, tissue, & joint inflammations & increases lymphatic circulation
- **Pleo Sancom** – combination of Muc & Nig indicated for circulatory & congestive issues combined with conditions of mucous membranes, tissues and/or joints
- **Pleo Mucedo** – indicated for regulatory dysfunction of lymphatic system, increases microcirculation to the endocrine glands & brain, thyroid function disturbances, upper respiratory tract conditions & neuro-vegetative syndrome (anxiety)

©This Education manual may not be duplicated by any means, electronic or otherwise, without express written permission from CIHS (The College of International Holistic Studies)

Step Four – Immuno Biological Remedies

- **Pleo Rec** – for sub-acute & chronic inflammations, esp inflammation of mucous membranes caused by fever – immune modulator
- **Pleo Lep** – increases blood circulation in the body & stimulation of the circulation to the extremities & immunostimulation
- **Pleo Lat** – indicated in sub-acute & chronic inflammations & conditions of weakness
- **Pleo Art A** – degenerative diseases of spinal column & entire apparatus of locomotion including arthritis, osteoporosis, ankylosing spondilitis & dental conditions
- **Pleo Art U** – stimulates endogenic defense capability & acts as adjuvant in anti-carcinomatous therapy

©This Education manual may not be duplicated by any means, electronic or otherwise, without express written permission from CIHS (The College of International Holistic Studies)

Immuno Biological Remedies – cont'd

- **Sanukehls** consist of 3:
- **Pleo San Acne** – for rheumatoid arthritis and acne conglobata
- **Pleo San Brucel** – for dysmenorrhea, influenza, intermittent fever & subacute rheumatoid arthritis
- **Pleo San Cand** – in cases of Candida mycosis, conditions associated with upper & lower digestive tract, gingivitis, eczema & dermatosis (esp) following antibiotics)
- **Pleo Ut** – for sub-acute & chronic inflammation, conditions of weakness, acts as an immune modulator and increases elimination process
- **Pleo Ut S** – acts as a strong immune modulator in conditions of respiratory tract, lung & extra pulmonary tuberculosis, fever & conditions of weakness

©This Education manual may not be duplicated by any means, electronic or otherwise, without express written permission from CIHS (The College of International Holistic Studies)

Sanums with the LIFE system

- Vibratory signals found on the reactivity panel
- Follow the 4 step process over 4 sessions or more
- Acid/Base balance also found in Cell Com panel (step 1)
- If susceptibility shows connective tissue, circulation, blood issues, viruses, bacteria, etc can now add Sanum frequencies to help remove the ENERGY BLOCKS

visit www.biomedicine.com for further info

©This Education manual may not be duplicated by any means, electronic or otherwise, without express written permission from CIHS (The College of International Holistic Studies)

Hidden Indicators of Intestinal Allergies

- **Respiratory Conditions** sniffing of infant, bronchitis spastica, asthmoid bronchitis, asthma, hay fever, allergies, sinusitis, sneezing attacks, chronic cough
- **Skin Conditions** Cradle cap, neurodermatitis, dermatis, eczema, seborreh, vitiligo, pruritis, acne
- **Stomach-Intestinal conditions** Abdominal colics, diarrhea, flatulence, constipation, gastric & intestinal ulcer, colitis, Chron's, hyperacidity
- **Joint Conditions** Arthritis, polyarthritis, rheumatism, inflammations, ankylosing spondylitis
- **Immune disturbances** Susceptability to infections, purulent chronic otitis media, hyperplasia of adenoids
- **Nervous Disorders** Restlessness, difficulty falling asleep, loss of concentration & memory
- **Skeletal Conditions** Osteoporosis, spinal conditions, decayed teeth & teeth with dead roots

©This Education manual may not be duplicated by any means, electronic or otherwise, without express written permission from CIHS (The College of International Holistic Studies)