

# INFLAMMATION

means healing  
**BUT** can get out of  
hand....

-Heel



## What is Inflammation?

- Chain of physiological actions and reactions
- Increased blood supply
- Increased permeability of vascular wall

-Heel

## Characteristics of Inflammation



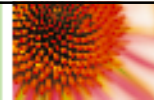
- Pain
- Swelling
- Redness
- Feeling of warmth
- Loss of function in the affected tissue

-Heel

July 2006, R. U. Gerard

48

## The Definition of Inflammation



- Inflammation is generally a localized specific manifestation of defence
- Accompanied by symptoms such as:
  - ▶ Swelling, redness, feeling of warmth, pain
- Loss of function in the affected tissue

-Heel

July 2006, R. U. Gerard

49

## Inflammation Phase



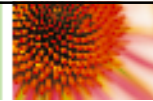
- To rid toxins and renew tissues
- Defense mechanisms are active and efficient
- Elimination of the toxins through pus, mucous, skin eruptions, etc.
- It should not be totally suppressed
- It needs to be modulated

-Heel

July 2006, R. U. Gerard

50

## Physiological Process of Inflammation



- Collagen
- Triggers
- Mast Cell
- Degranulation
- Heparin/Histamine
- Prostaglandins
- Phospholipids
- Arachidonic acid
- Leukotrienes

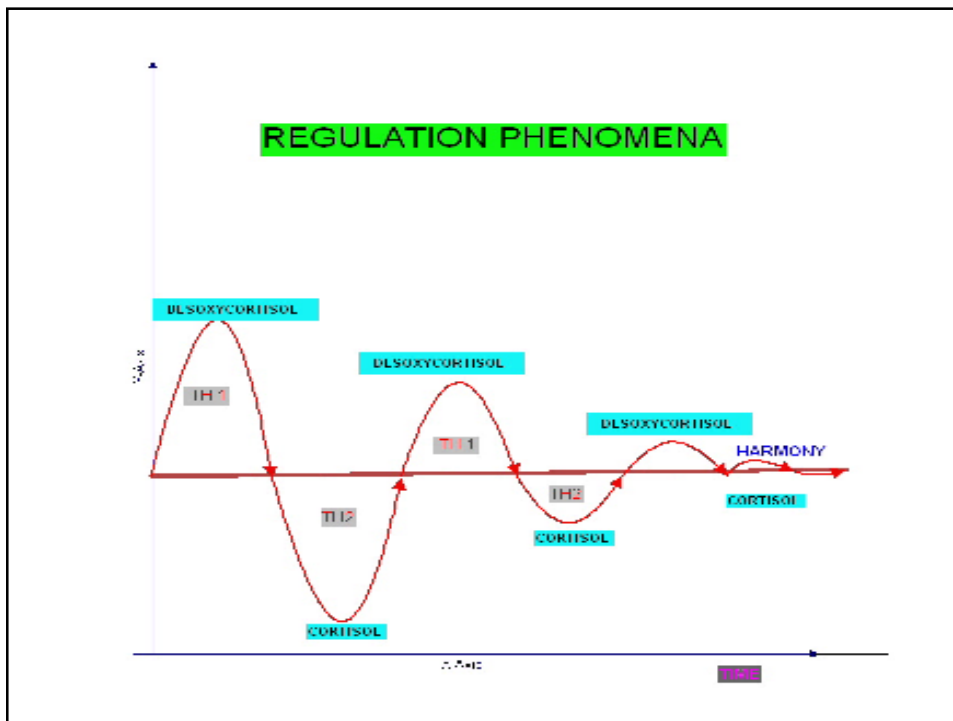
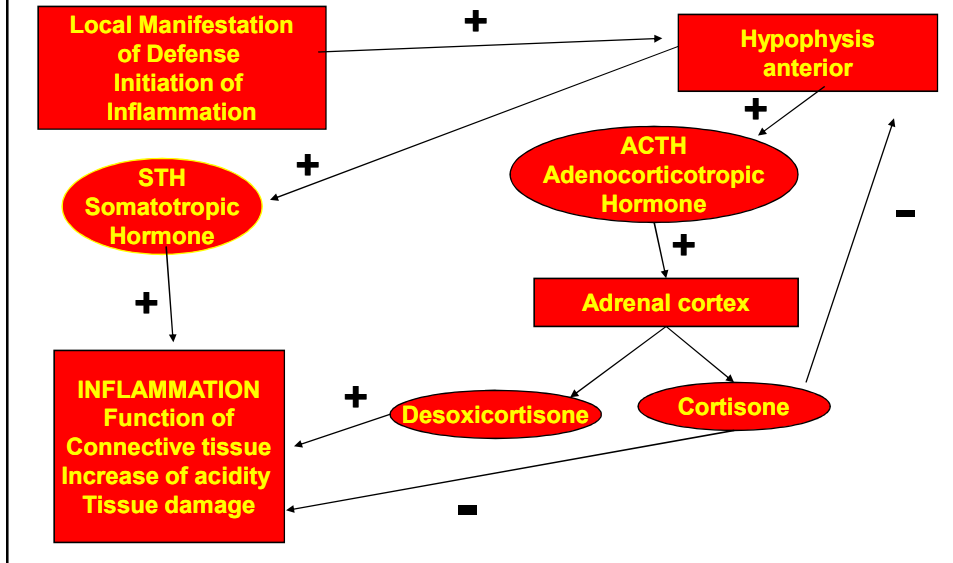
-Heel

July 2006, R. U. Gerard

51

# The Hormonal Aspect

## Feedback = Auto Regulation System



## Inflammation is Biologically Purposeful



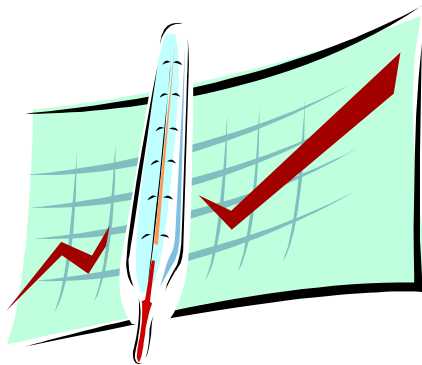
- Necessary to eliminate the toxic substances in the body and repair injured tissues
- Biotherapeutic approach guides and stimulates the regulating facets
- Result is the disappearance of symptoms
- The cause has been treated

-Heel

July 2006, R. U. Gerard

54

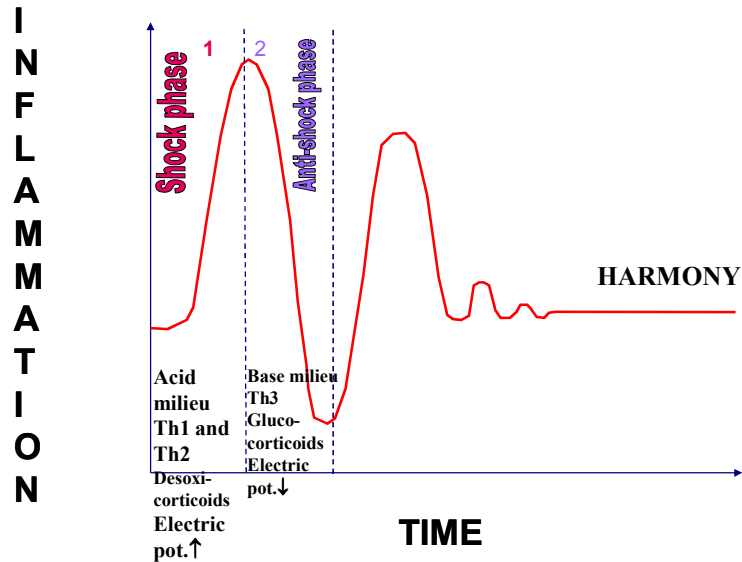
## Inflammatory Model According to Prof. Hans Selye



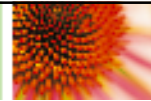
- Inflammation is a cyclic process
- Due to self-regulating hormonal feedback system
- Feedback leads to repetitive inflammation which gets less severe

Viennese researcher who moved to Canada and achieved International recognition for research into the influence of stress on the living organism.

## Inflammation Model According to Hans Selye



## The Inflammation Model's Cycle



- Inflammation grows in the first phase
- Th3 cells increase in the second phase
- Cortisone increases
- Remaining homotoxins induce new shock phase
- Self regulation feedback system
- System lapse causes major intoxication
- Body will attack its own organism

Valuable argument against suppression of inflammation

-Heel



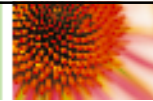
# Homotoxins

**“Homotoxins burn in the fire of an inflammation...”**

Dr. H.-H. Reckeweg

**“Or will be stored in the extracellular matrix (ECM) and create chronic diseases”**

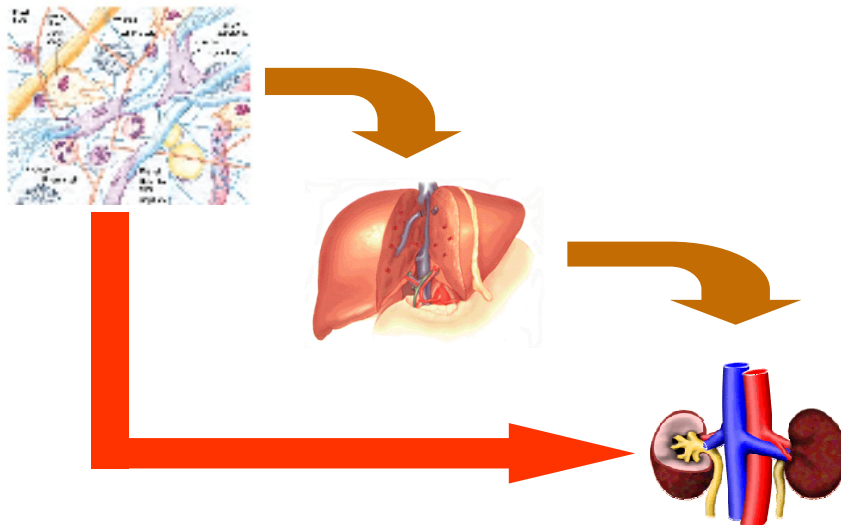
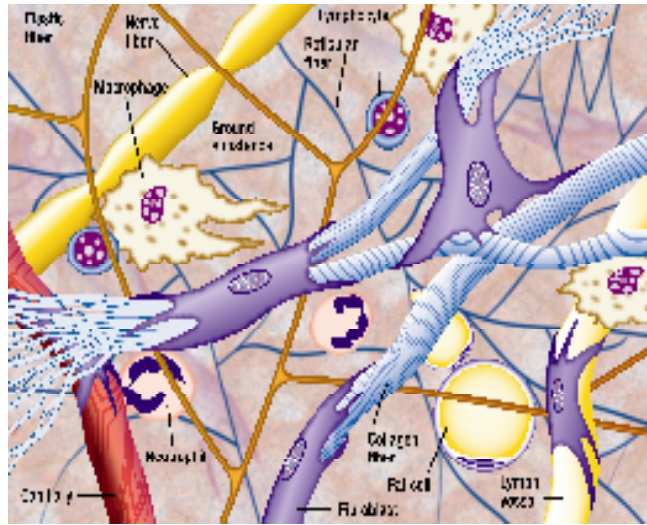
## Detoxification strategy



- Drain homotoxins over the lymphatic system from ECM to liver, GI and kidneys
- Detoxify (elimination) the homotoxins through the liver and kidneys
- Excretion of the homotoxins out of the body

-Heel

## The Matrix, a basic bioregulation system, crucial to deep detoxification



## One Last thought

“Even if total regeneration of the affected tissue or organ is not possible, the progressive vicariation will be stopped or inhibited and the quality of life of the patient will remarkably increase.”



-Heel